

The background is a solid blue color with a pattern of small, white, line-art icons scattered across it. These icons represent various office and school items, including papers, folders, pens, pencils, erasers, rulers, protractors, scissors, staplers, paper clips, and mobile devices like smartphones and tablets. The icons are distributed evenly across the entire background.

# Let's Build a Bridge!

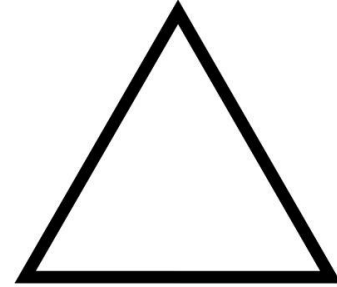
## What Is a Bridge?

- A raised road, commonly, going across a body of water
- For vehicles and people
- Bridges can be massive or short

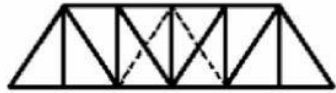


# Why do Bridges Stay Up?

- Supports
  - Triangles
  - Posts
  - Beams
  - Cables



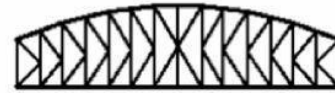
## Some of the Many Types of Bridges



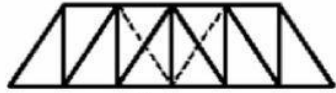
Pratt



Parker



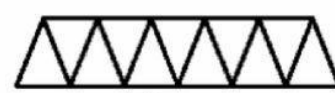
K-Truss



Howe



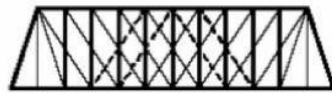
Camelback



Warren



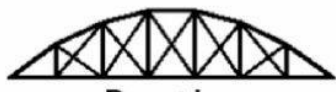
Fink



Double Intersection Pratt



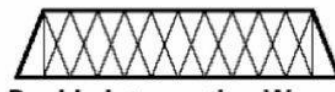
Warren (with Verticals)



Bowstring



Baltimore



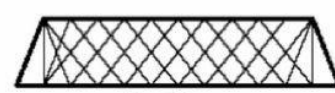
Double Intersection Warren



Waddell "A" Truss



Pennsylvania



Lattice

## Some Bridges You May Have Heard of



Golden Gate Bridge



Tower Bridge



Brooklyn Bridge

## Contest

---

You have until 10 minutes before the end of class to build a bridge that you think will hold the most weight.

- You can work solo or in groups of 2
- The bridge must be at least 10 inches long
- It cannot have any center poles
- The bridge will be set on 2 planks of wood
- Weights will be set on the surface of the bridge
- The bridge that can hold the most weight will win a prize!
- You must use the materials provided

The background is a solid blue color with a pattern of small, white, line-art icons scattered across it. These icons represent various office and school supplies, including paper clips, paper airplanes, envelopes, mobile phones, notepads, pens, pencils, rulers, protractors, scissors, and computer mice. The icons are distributed evenly across the entire background.

Your Time Starts...

The background is a solid blue color with a pattern of small, white, line-art icons scattered across it. These icons represent various office and school items, including papers, folders, pens, pencils, erasers, rulers, protractors, scissors, staplers, paper clips, and mobile devices like smartphones and tablets. The icons are distributed evenly across the entire background, creating a busy, thematic texture.

NOW!!!!